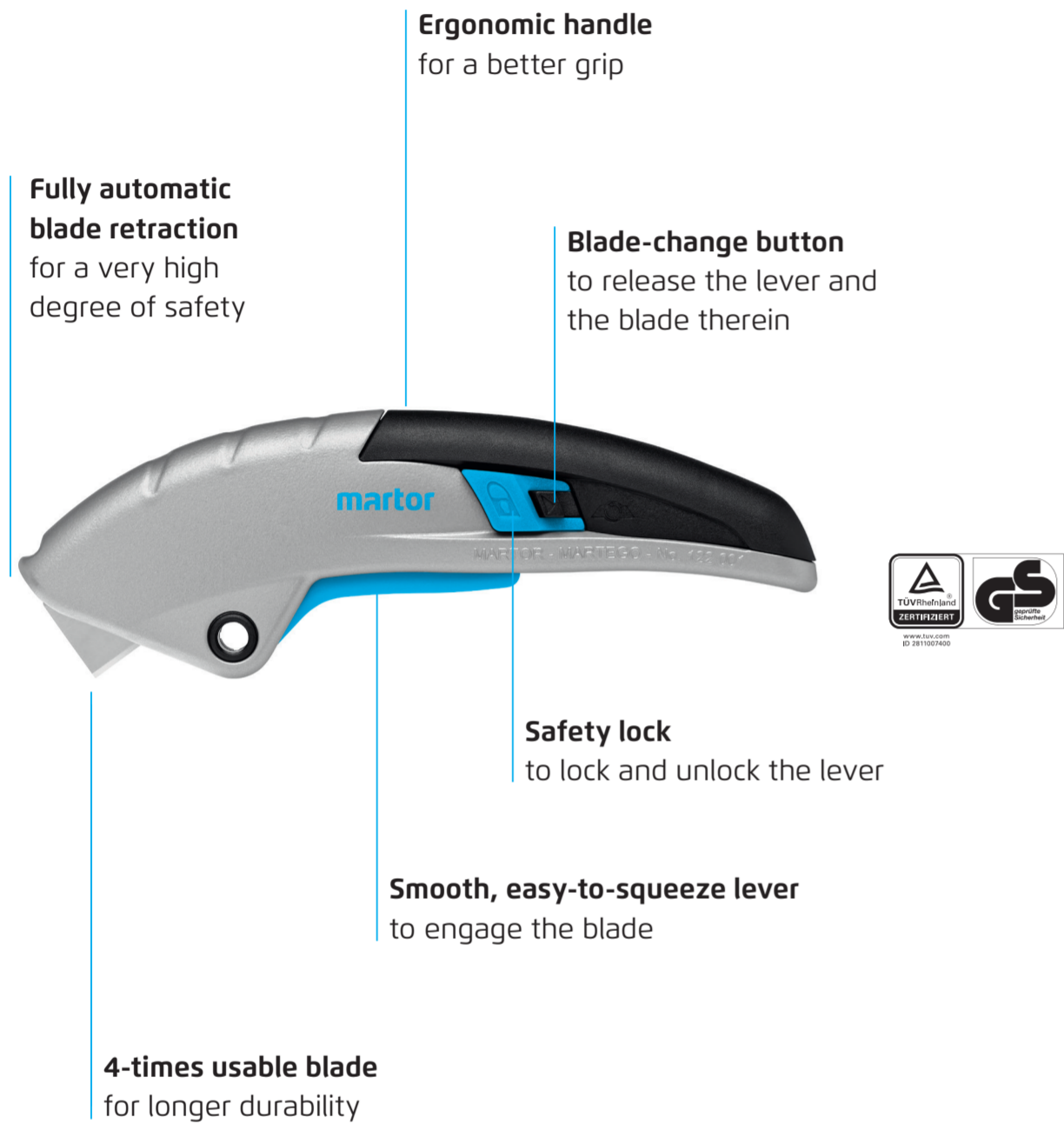


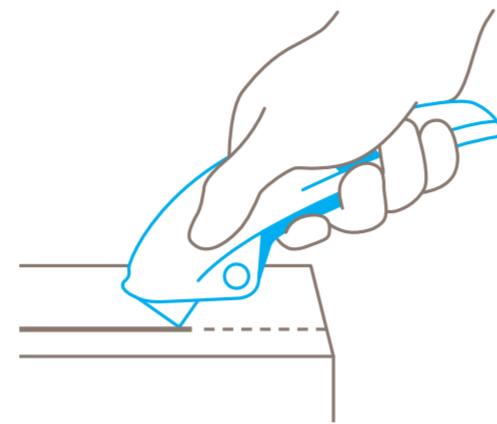
# SAFETY POSTER INSTRUCTIONS FOR THE SAFE HANDLING OF YOUR CUTTING TOOL

# martor

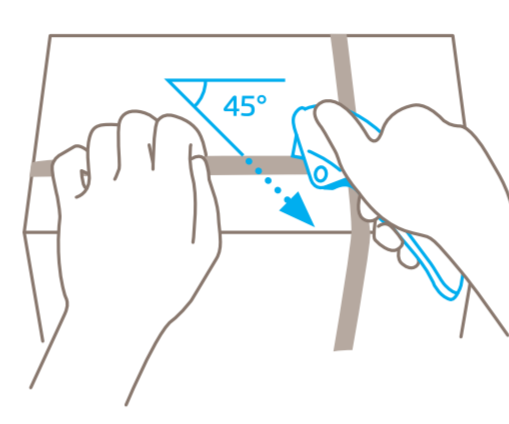
## SECUPRO MARTEGO



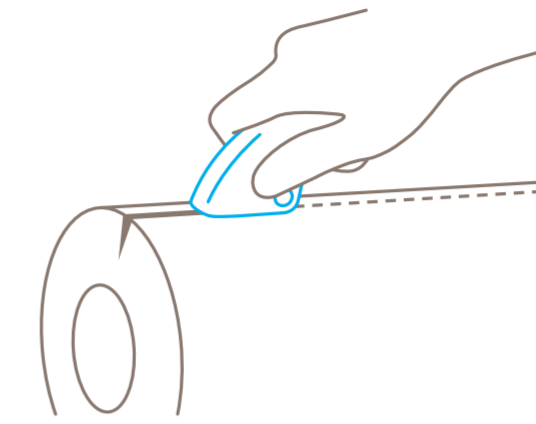
### USAGE



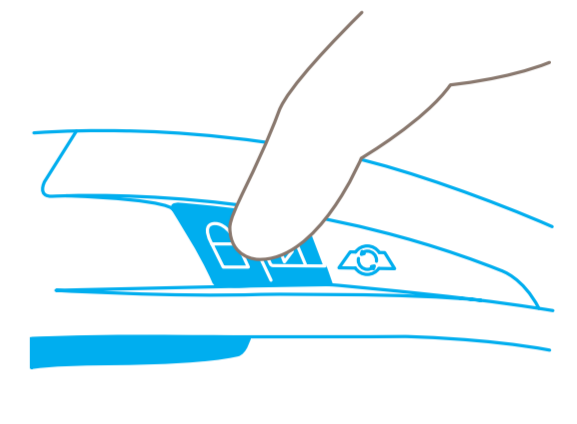
To engage the blade, unlock the cutter and **squeeze the lever**. Now you can cut.



For best results, cut plastic strapping band **diagonally** (at a 45° angle).

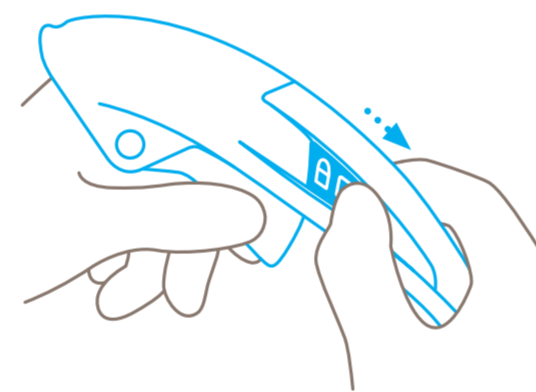


Use the underside of the cutter head as a supporting surface to **work ergonomically** and efficiently.

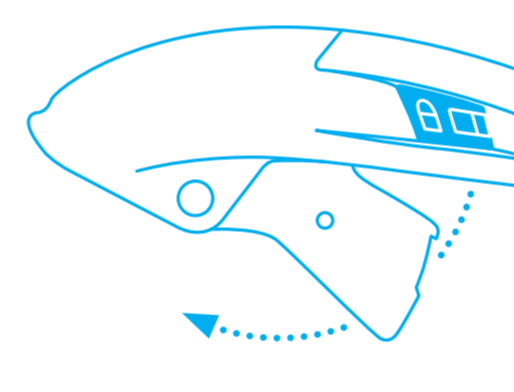


To prevent unintentional blade activation, always **lock the cutter** by pressing downwards on the lock symbol.

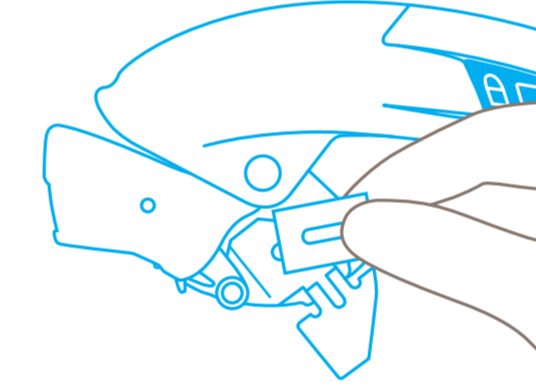
### BLADE CHANGE



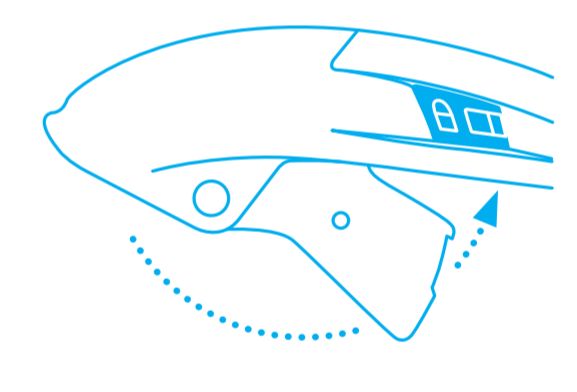
Lock your cutting tool and pull back the small **black blade-change button**.



**Swing the lever out** of the handle and flip open the blade cover.

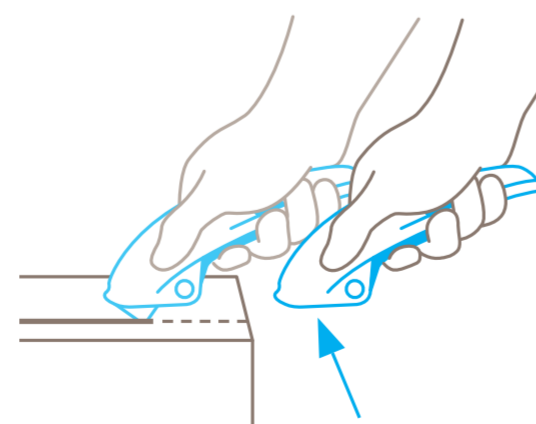


Now you can either **rotate or replace the blade**. Please close the blade cover again.



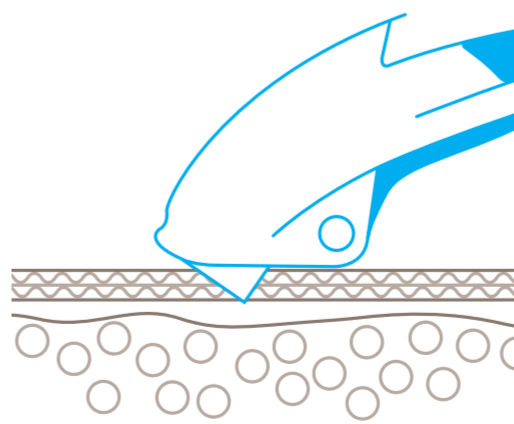
Finally, push the lever back into the handle until you **hear it click into place**.

### PROTECTION OF USER



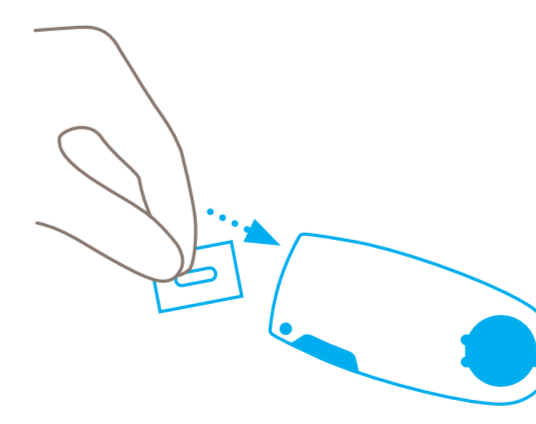
The blade automatically retracts into the handle the moment cutting ceases. Even when the lever is **still being squeezed**.

### PROTECTION OF GOODS

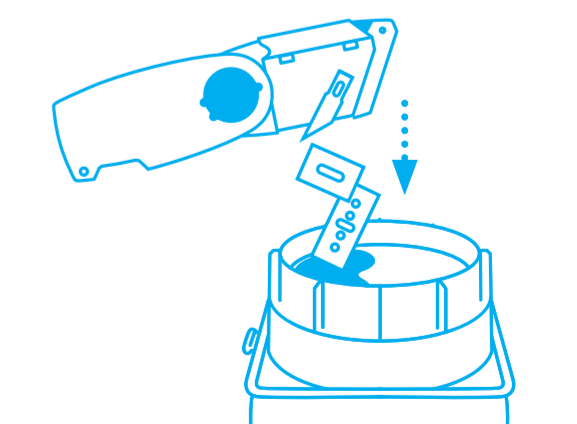


An appropriately **small cutting depth** serves to protect your goods.

### DISPOSAL



Your **SAFEBOX** is the best place to store **used blades**.



When the **SAFEBOX** is full, **empty all contents** into your **RECYCLING BOX**.

**Please note:** to ensure your product always functions flawlessly, regularly remove any build-up of cutting material.